

**ALBOND**  
aluminium composite panel

**URBAN LINE**

## URBAN LINE

At Albond, we pride ourselves on our unwavering commitment to sustainable building solutions through our premium aluminum composite products. Our distinctive offerings come in a diverse array of colors and can be enriched with unique functional coatings, each playing a pivotal role in advancing sustainable green building design.

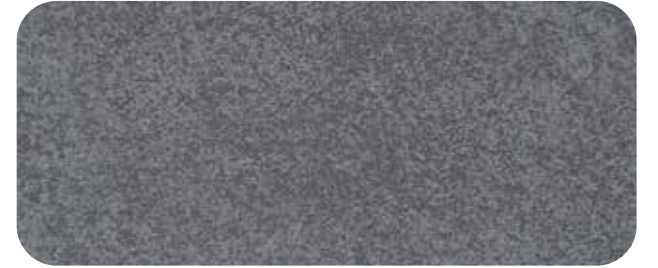
The foundation of a sustainable building envelope is crucial for minimizing primary energy consumption in heating, cooling, and maintenance. This, in turn, elevates the aesthetic appeal and lifespan of facades, roofs, and building envelopes. Albond remains steadfast in our dedication to environmental responsibility, ensuring our products are fully recyclable at every stage of production and at the culmination of their lifecycle.

With almost 20 years of specialized expertise in aluminum coating and precise color matching, we are well-equipped to provide reliable guidance on product specifications. Our experienced team meticulously oversees every facet of the process, from production to delivery, contributing to the realization of your unique architectural vision. Opt for Albond for environmentally conscious, high-performing building solutions.

**Urban Line:** The Urban Line family entirely captures the essence of patterns formed by concrete. Albond's panels in this collection mirror the urban landscape, offering a contemporary and industrial aesthetic. Ideal for those seeking a modern and bold statement for their spaces.



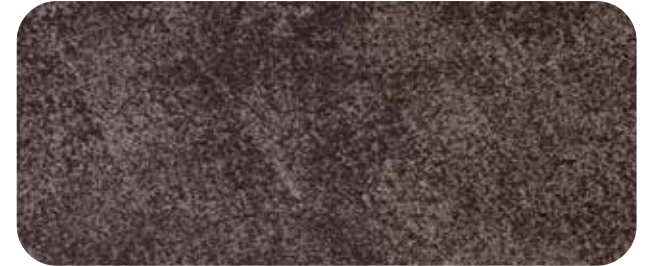
CL001 - Concrete I



CL002 - Concrete II



CL003 - Concrete III



CL004 - Concrete IV



CL005 - Concrete V



CL006 - Anthracite Concrete



CL007 - Stonehenge



CL008 - Stonehenge



DAHA FAZLASI İÇİN





D R E A M S   C O V E R E D   W I T H   R E A L I T Y



**Address:** Hatip Mahallesi Ali Osman Çelebi Bulvarı No:140 59860 Çorlu, Tekirdağ - TURKEY

**Phone:** +90 282 661 10 10 **Fax:** +90 282 661 10 11

**E-Mail:** export@albond.com.tr **Web:** www.albond.com.tr/eng